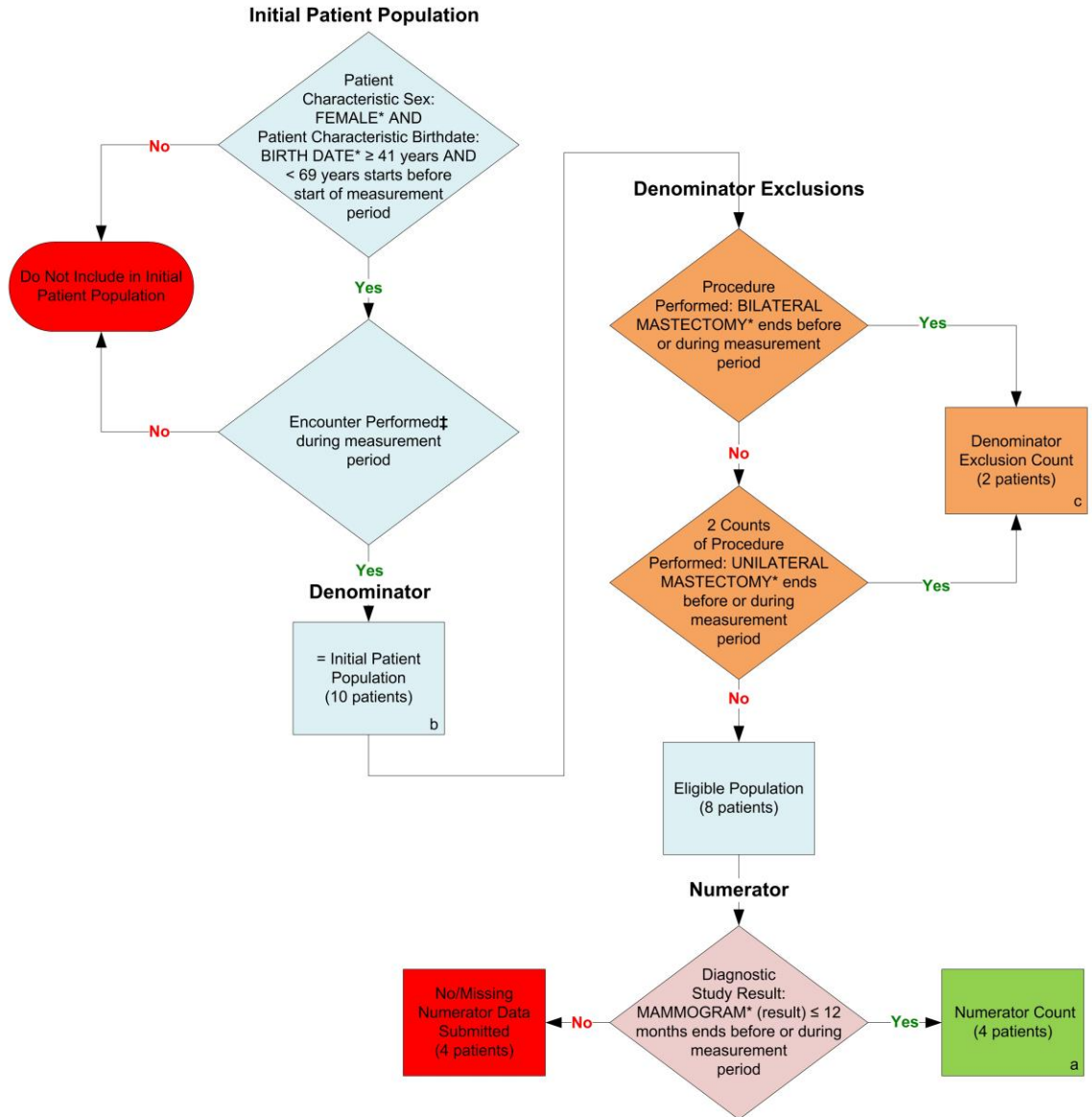


2014 eCQM Flow
Measure Identifier: CMS125v3
NQF 0031: Breast Cancer Screening



*Please refer to the specific section of the eCQM to identify the QDM data elements and associated value sets for use in reporting this eCQM.
† For a listing of appropriate encounters, please refer to the QDM data elements and associated value sets as specific data elements have not been listed.

SAMPLE CALCULATION:

Performance Rate =

$$\frac{\text{Numerator (a=4 patients)}}{\text{Denominator (b=10 patients) - Denominator Exclusions (c=2 patients) - Denominator Exceptions (N/A)}} = 50.00\%$$

2014 eCQM Flow
Measure Identifier: CMS125v3
NQF 0031: Breast Cancer Screening

Please refer to the specific section of the eCQM to identify the QDM data elements and associated value sets for use in reporting this eCQM.

1. Start Initial Patient Population
2. Check Patient Characteristic Birthdate:
 - a. If the QDM data element, BIRTH DATE, is greater than or equal to 41 years of age AND less than 69 years of age before the start of the measurement period equals No, do not include in Initial Patient Population and stop processing.
 - b. If the QDM data element, BIRTH DATE, is greater than or equal to 41 years of age AND less than 69 years of age before the start of the measurement period, equals Yes continue processing and proceed to check Patient Characteristic Sex.
3. Check Patient Characteristic Sex:
 - a. If the QDM data element, FEMALE equals Yes, continue processing and proceed to check Encounters Performed.
 - b. If the QDM data element, FEMALE equals No, do not include in Initial Patient Population and stop processing.
4. Check Encounters Performed:
 - a. If the QDM data element, OFFICE VISIT during the measurement period equals Yes, include in the Initial Patient Population and proceed to Denominator.
 - b. If the QDM data element, OFFICE VISIT during the measurement period equals No, proceed to check next Encounter Performed.
 - c. If the QDM data element, FACE-TO-FACE INTERACTION during the measurement period equals Yes, include in the Initial Patient Population and proceed to Denominator.
 - d. If the QDM data element, FACE-TO-FACE INTERACTION during the measurement period equals No, proceed to check next Encounter Performed.
 - e. If the QDM data element, PREVENTIVE CARE SERVICES – ESTABLISHED OFFICE VISIT, 18 AND UP during the measurement period equals Yes, include in the Initial Patient Population and proceed to Denominator.
 - f. If the QDM data element, PREVENTIVE CARE SERVICES – ESTABLISHED OFFICE VISIT, 18 AND UP during the measurement period equals No, proceed to check next Encounter Performed.
 - g. If the QDM data element, PREVENTIVE CARE SERVICES – INITIAL OFFICE VISIT, 18 AND UP during the measurement period equals Yes, include in the Initial Patient Population and proceed to Denominator.

- h. If the QDM data element, PREVENTIVE CARE SERVICES – INITIAL OFFICE VISIT, 18 AND UP during the measurement period equals No, proceed to check next Encounter Performed.
 - i. If the QDM data element, HOME HEALTHCARE SERVICES during the measurement period equals Yes, include in the Initial Patient Population and proceed to Denominator.
 - j. If the QDM data element, HOME HEALTHCARE SERVICES during the measurement period equals No, proceed to check next Encounter Performed.
 - k. If the QDM data element, ANNUAL WELLNESS VISIT during the measurement period equals Yes, include in the Initial Patient Population and proceed to Denominator.
 - l. If the QDM data element, ANNUAL WELLNES VISIT during the measurement period equals No, do not include in Initial Patient Population and stop processing.
- 5. Start Denominator
 - a. Denominator equals the Initial Patient Population. Denominator is represented by the letter B in the sample calculation listed at the end of this document. Letter B equals 10 patients in the sample calculation.
- 6. Start Denominator Exclusions
- 7. Check Procedure Performed:
 - a. If QDM data element BILATERAL MASTECTOMY ends before or during the measurement period equals Yes, include in Exclusions count. Exclusions are represented by the letter C in the sample calculation listed at the end of this document. Letter C equals 2 patients in the sample calculation.
 - b. If QDM data element BILATERAL MASTECTOMY ends before or during the measurement period equals No, proceed to check next Procedure Performed.
 - c. If 2 counts of QDM data element UNILATERAL MASTECTOMY ends before or during the measurement period equals Yes, include in Exclusions count. Exclusions are represented by the letter C in the sample calculation listed at the end of this document. Letter C equals 2 patients in the sample calculation.
 - d. If 2 counts of QDM data element UNILATERAL MASTECTOMY ends before or during the measurement period equals No, proceed to Numerator.
- 8. Start Numerator

9. Check Diagnostic Study Result:
- a. If QDM data element MAMMOGRAM (result) less than or equal to 12 months ends before or during measurement period equals Yes, include in Numerator count. Numerator is represented by the letter A in the sample calculation listed at the end of this document. Letter A equals 4 patients in the sample calculation.
 - b. If QDM data element MAMMOGRAM (result) less than or equal to 12 months ends before or during measurement period equals No, include in No/Missing Numerator Data Submitted count and stop processing.

SAMPLE CALCULATION:

Performance Rate =

Numerator (a=4 patients)

÷

Denominator (b=10 patients) – Denominator Exclusions (c=2 patients) – *Denominator Exceptions (N/A)*

= 50.00%